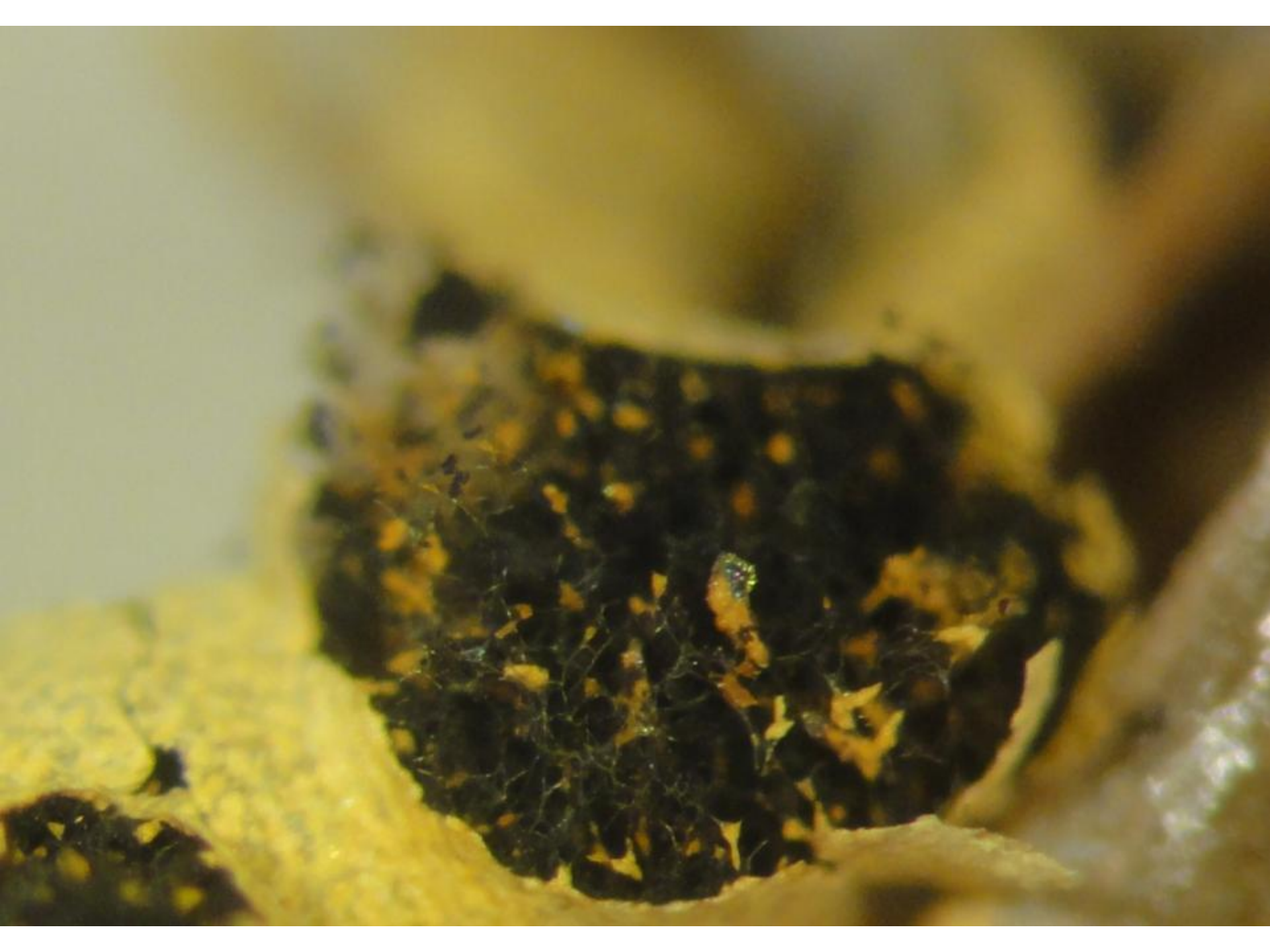


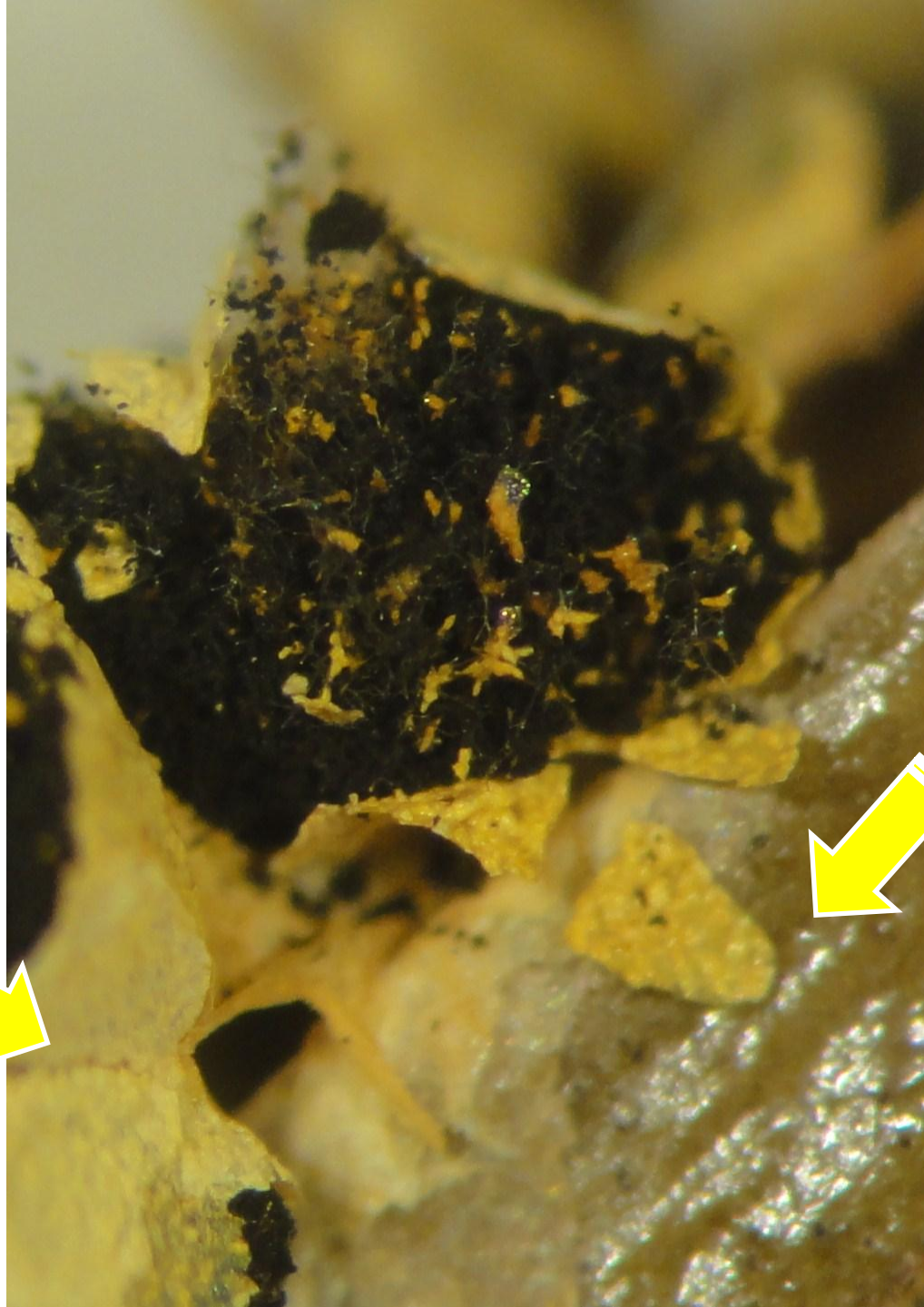
***Physarum albescens*** Ellis, ex T. Macbr

Esserts-Blay (FR73), 07/05/2000 Alt. 1500m, nivicole. Spores 13-15  $\mu\text{m}$ . Herb. M. Meyer 21175





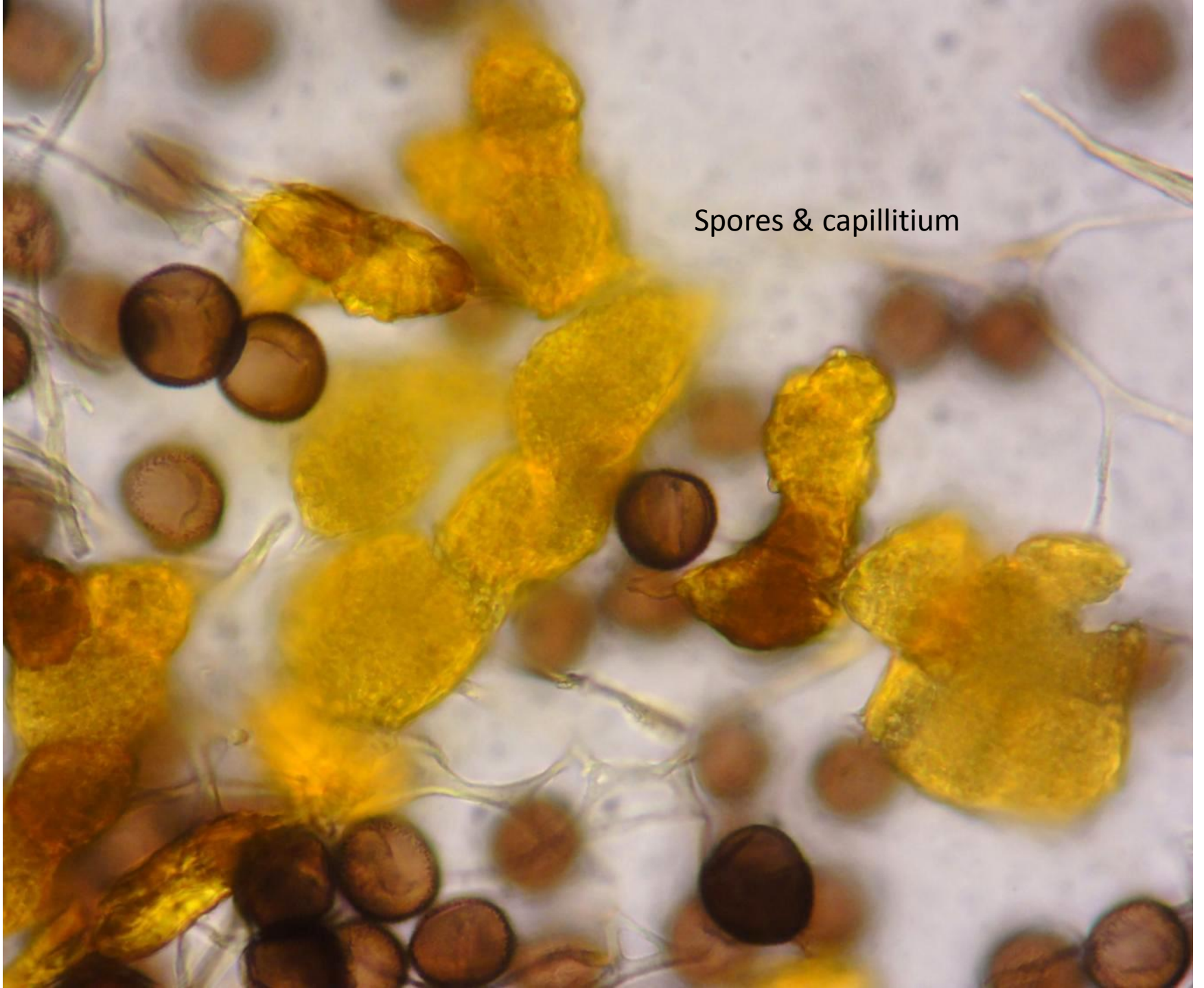
Péridium double,  
couche externe



Couche interne

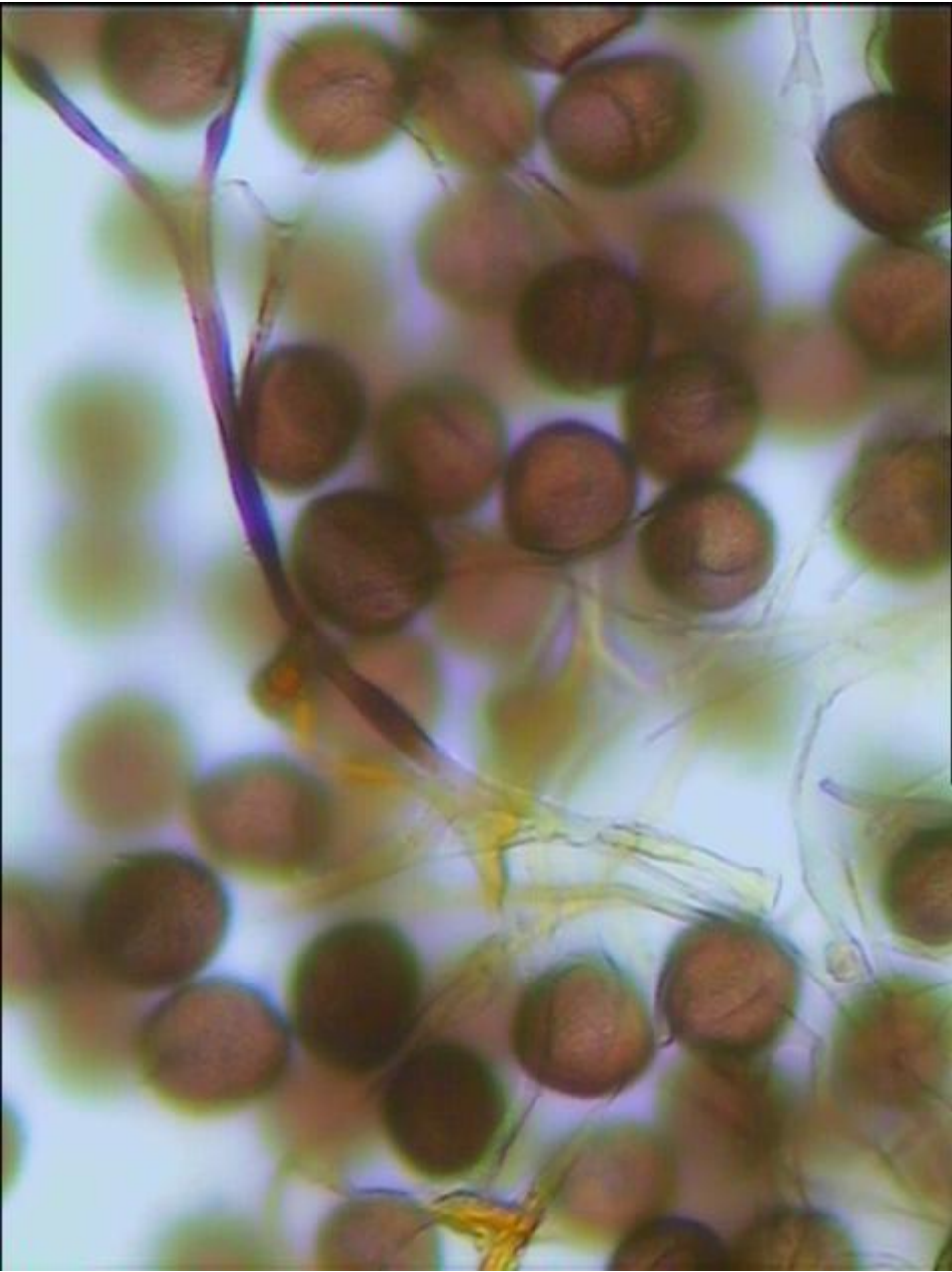


Spores & capillitium

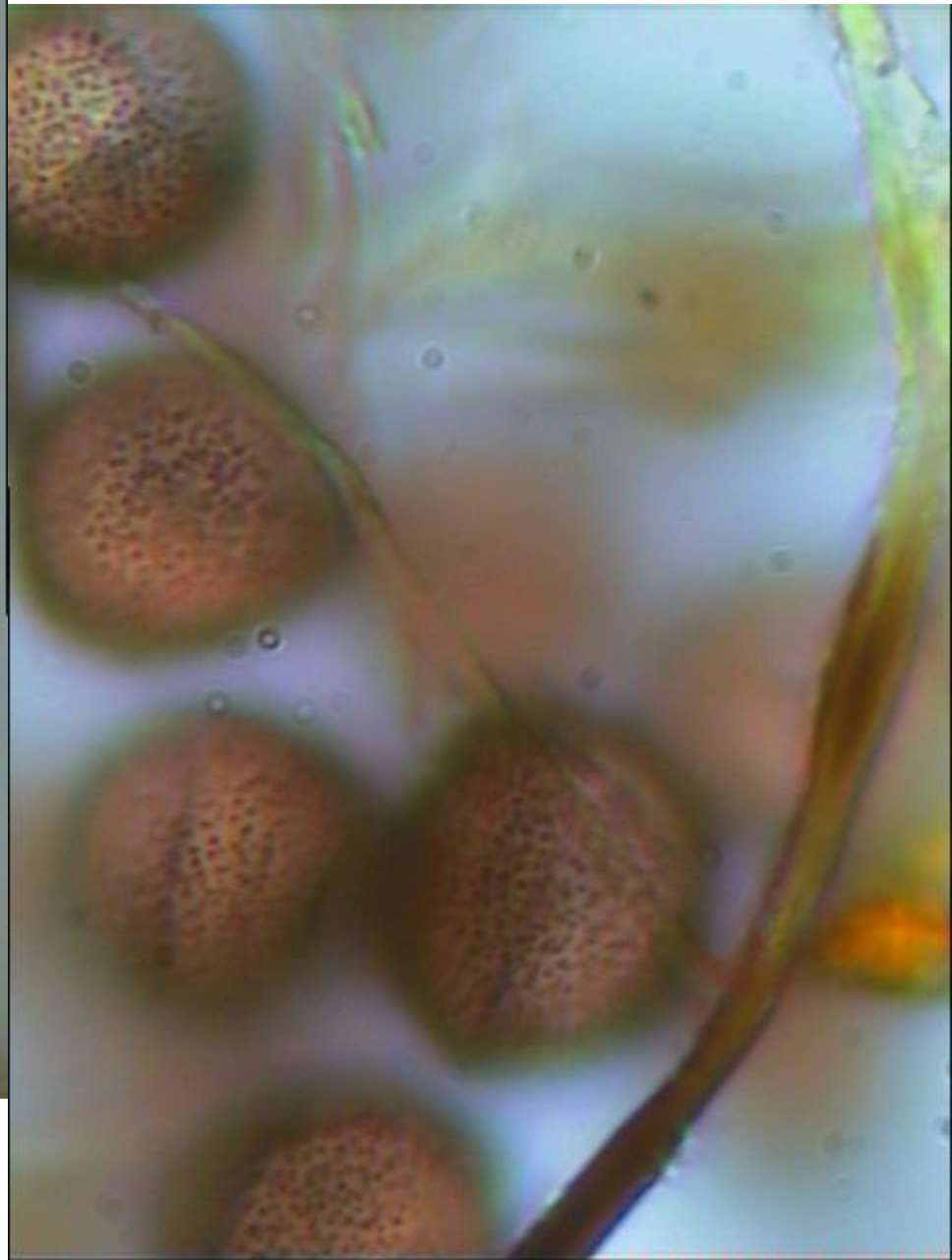




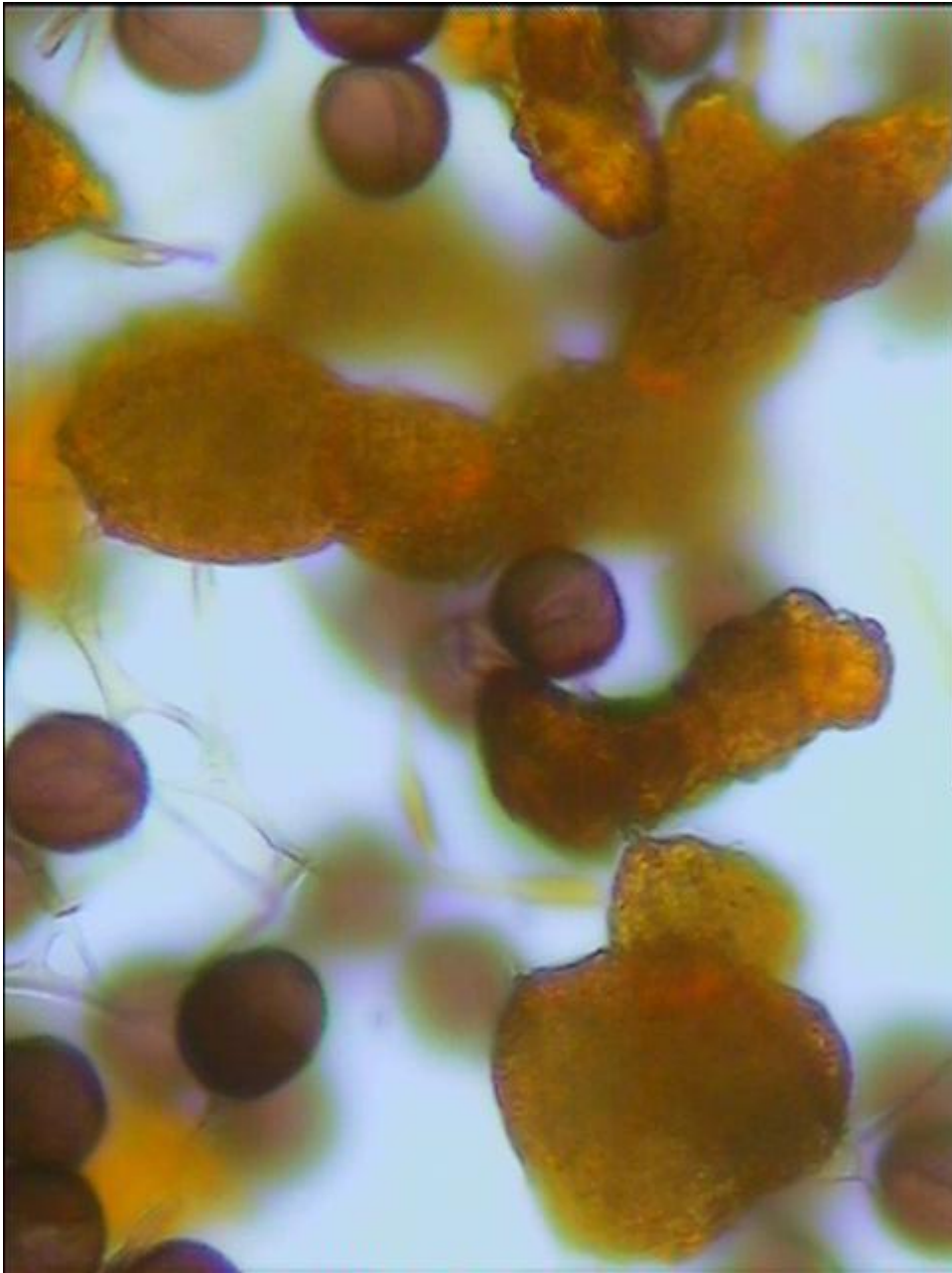
Filaments du capillitium (à la base (?))  
plus épais, plus rigides et plus foncés  
par endroits.





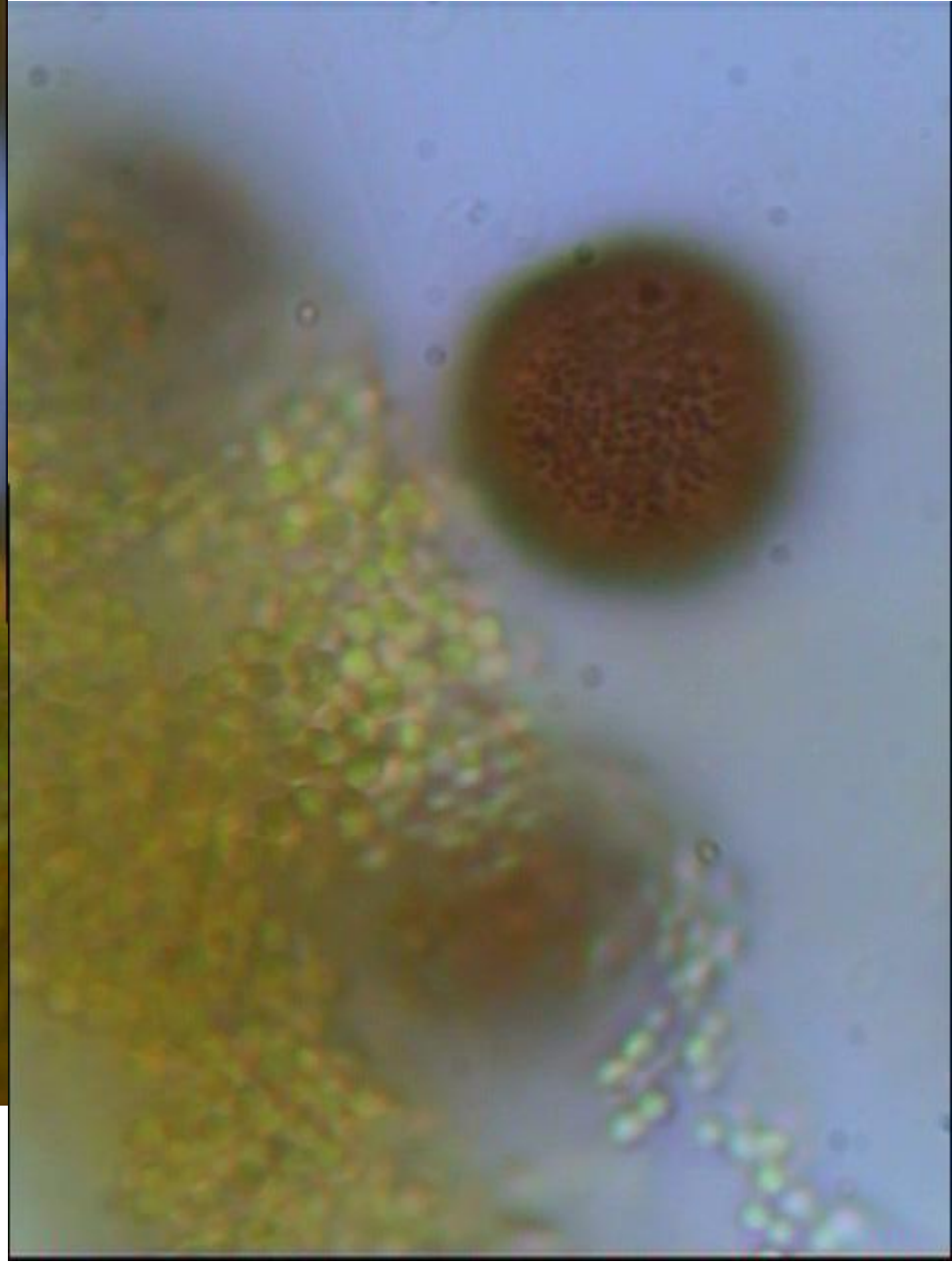
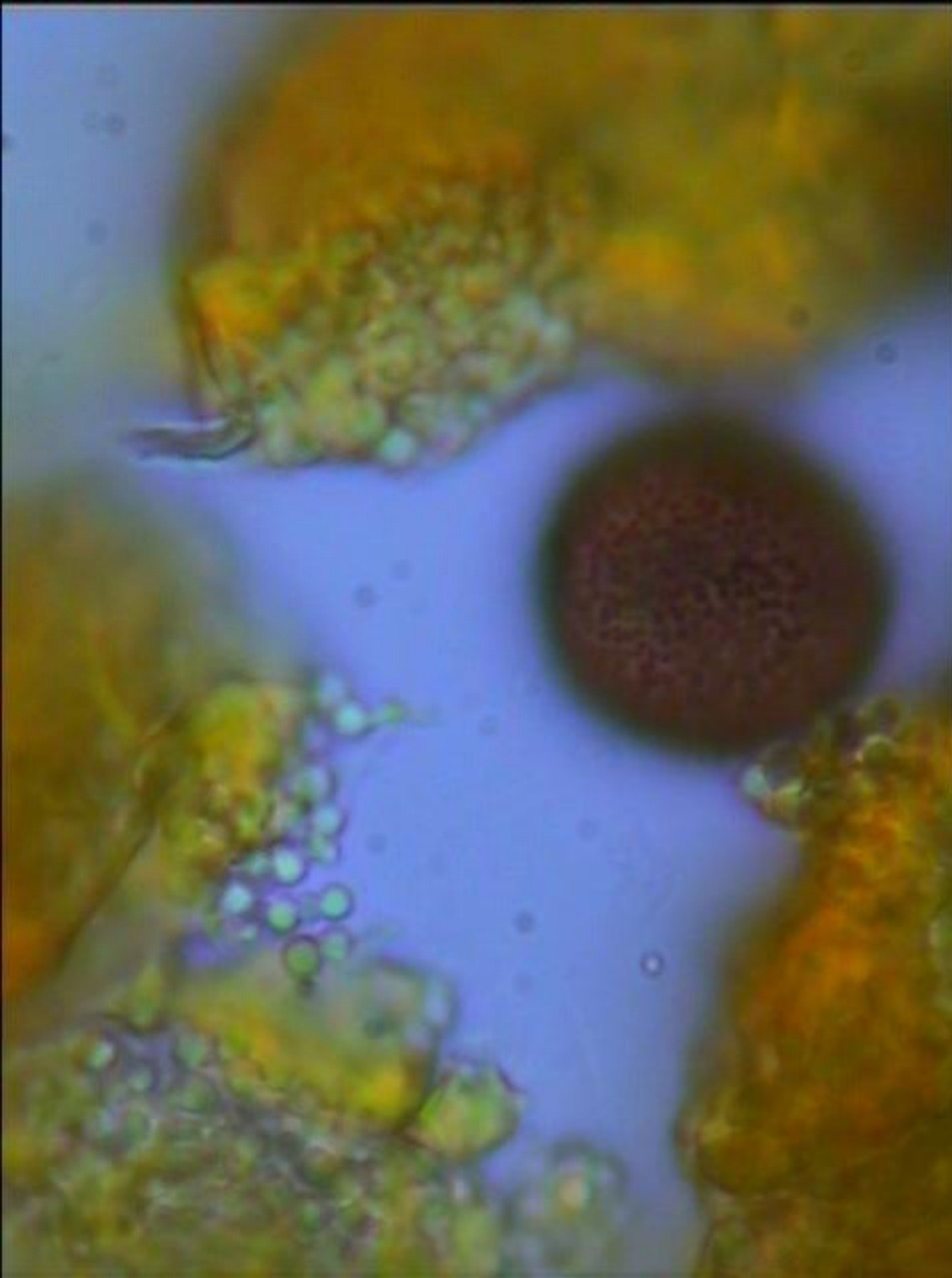


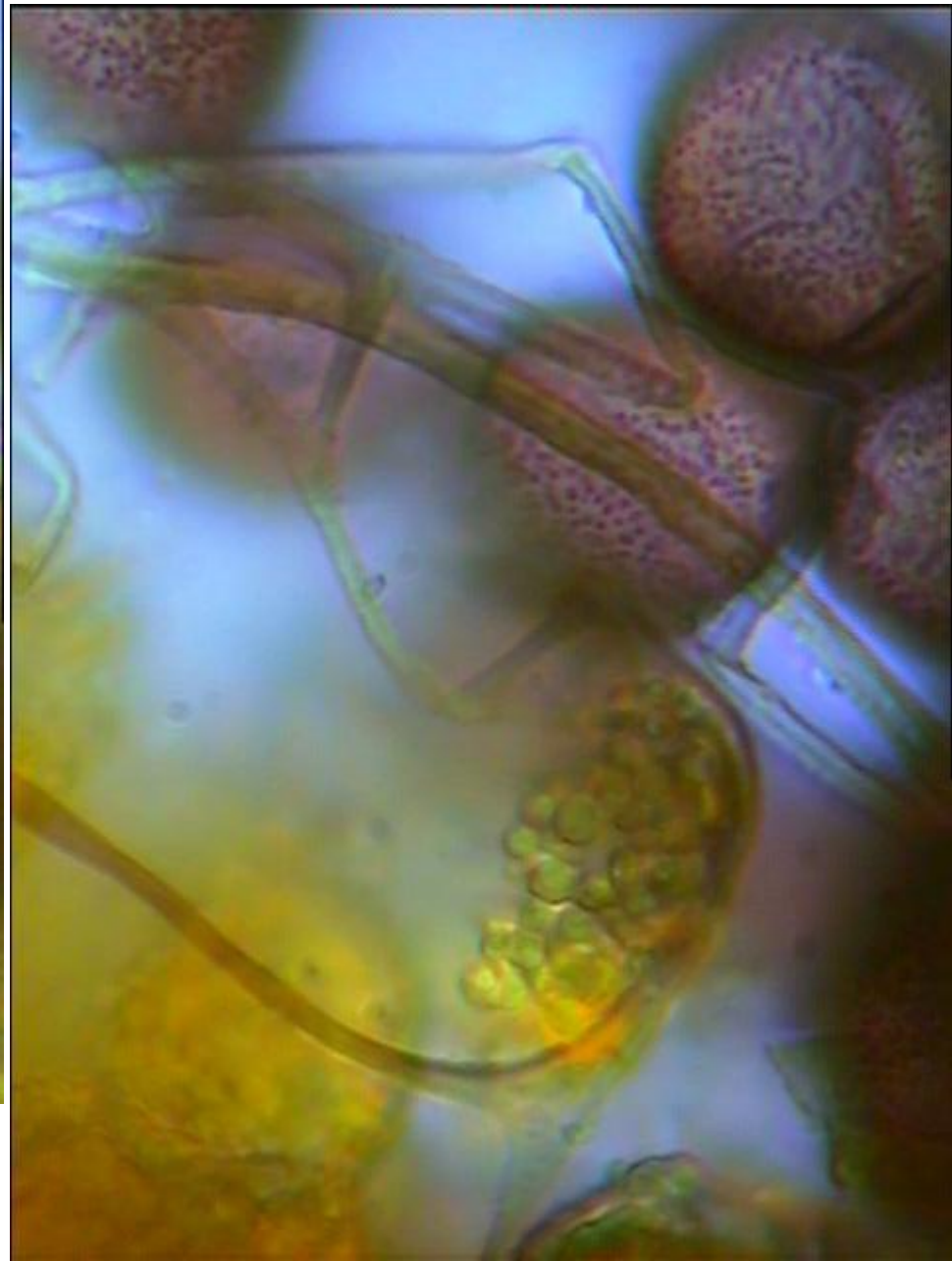
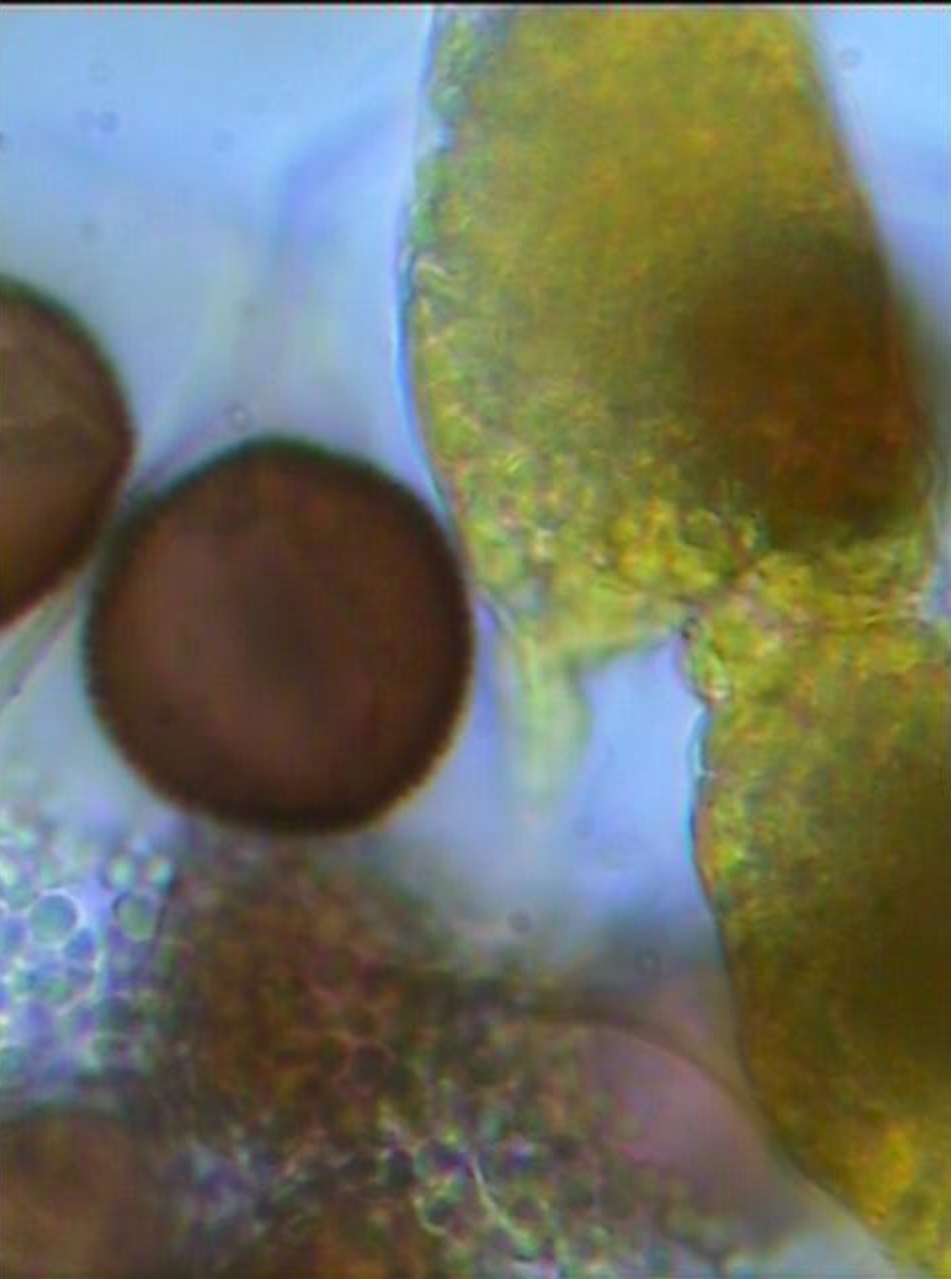


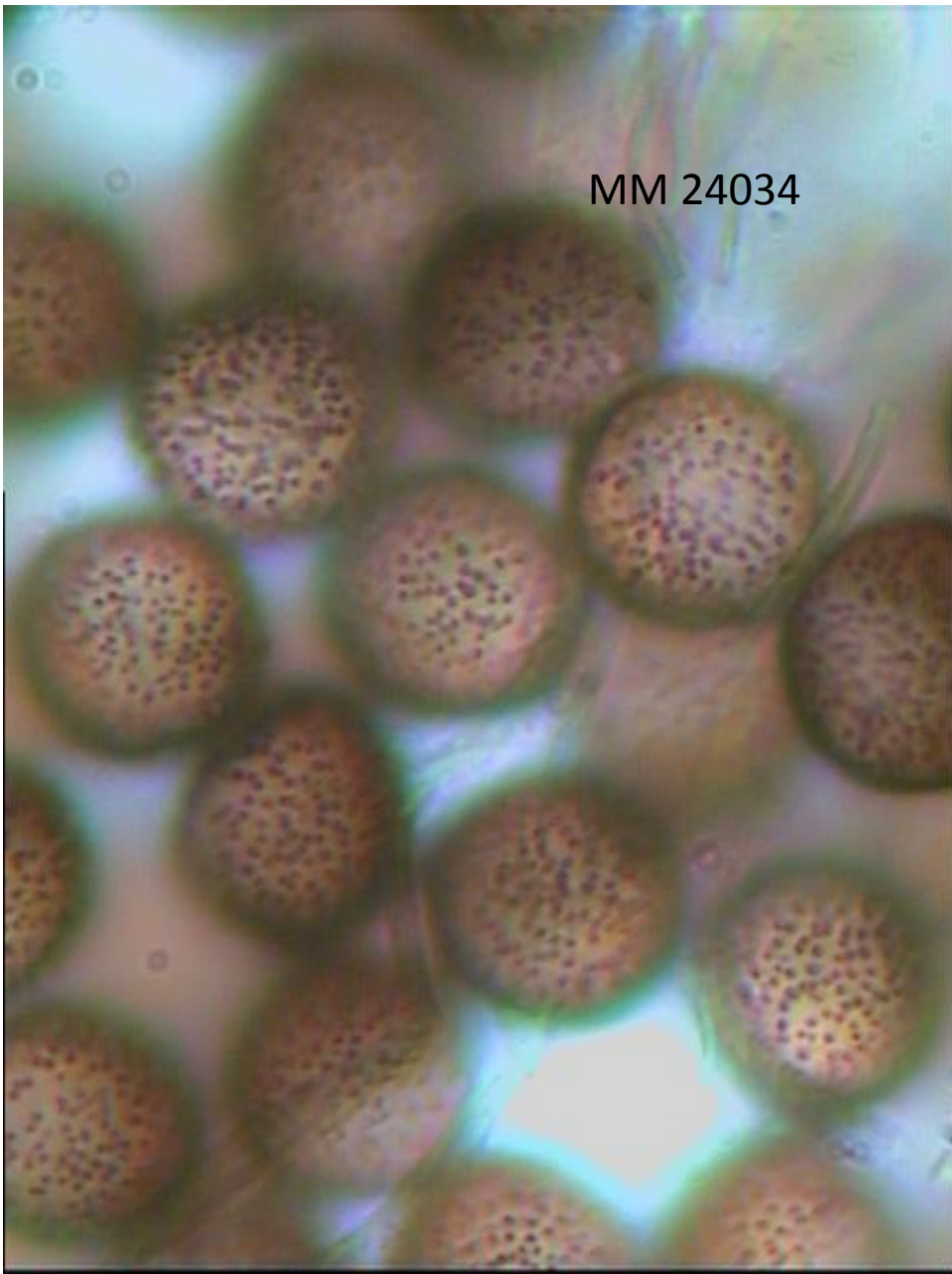


Spores et nœuds du capillitium

Spores & granules des nœuds calcaires







MM 24034



MM 21175, l'ornementation me semble plus dense et plus fine que MM 24034 (ci-contre)

MM 21175, l'ornementation me semble plus dense et plus fine que MM 24034 (ci-contre)

MM 24034

